

2023 KANGWON NATIONAL UNIVERSITY

Spring & Fall Semester
Graduate School Application Guidelines
for International Students



2023 Spring & Fall Semester Graduate School Application Guidelines for International Students

Chuncheon Campus

Office of International Affairs,
Kangwon National University, 1 Gangwondaehak-gil,
Chuncheon-si, Gangwon-do, Republic of Korea (24341)
Phone +82-33-250-6985 E-mail enter@kangwon.ac.kr

Samcheok Campus

Department of Operating Planning, Kangwon National University,
Samcheok Campus(Green Energy Research Center 910) 346 Joongang-ro,
Samcheok-si, Gangwon-do, Republic of Korea (25913)
Phone +82-33-570-6891 E-mail applyknu@kangwon.ac.kr

[f @KNU_foreignstudents](#) [in @Kangwon National University](#) [t @Official_KNU](#)

[@kangwon_national_university](#) [@KNU International](#)





KANGWON NATIONAL UNIVERSITY

Graduate School Application Guidelines
for International Students

CONTENTS

I. About Kangwon National University	1
II. Application Schedule	7
III. Degree Programs	8
IV. Eligibility for Application	8
V. Qualifications for Applicants	8
VI. Departments and Programs	10
1. Chuncheon Campus	10
2. Samcheok Campus	15
VII. Application Procedure	17
VIII. Application Submission and Required Documents	18
IX. Notification of Acceptance and Enrollment	24
X. Important Notice to Applicants	25
XI. Scholarships	27
XII. Evaluation Procedure	28
XIII. Korean Language Program	28
XIV. Dormitory Information	30
Information on the Website and Phone Number of Departments	31
Campus Map	38
Various Forms for 2023 Spring & Fall Semester	39
Applicant Surveys	47

I. About Kangwon National University

History



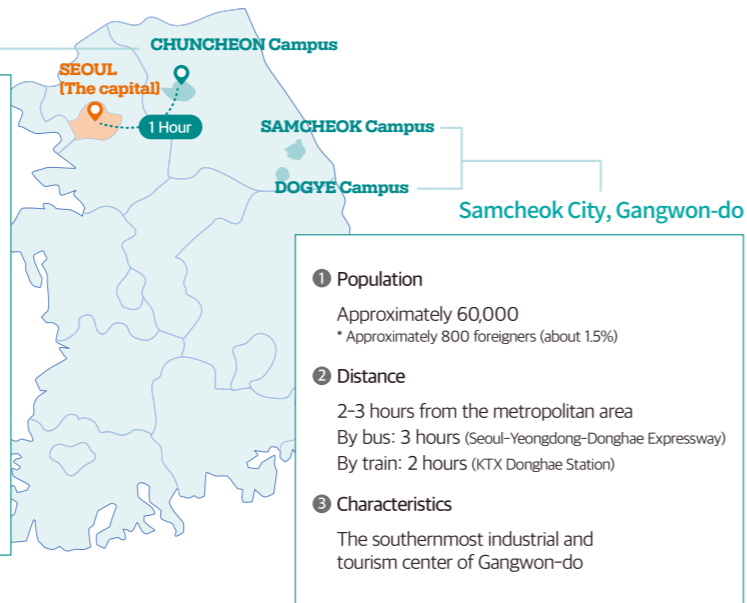
Number of enrolled students		Number of international students (745 in total)				Number of full-time faculty	Number of Employees
Undergraduate	Graduate	Undergraduate	Graduate	Exchange	Language program		
28,974	2,279	271	326	63	85	975	377

As of April 01, 2022 Unit: Number of person

Location

Chuncheon City, Gangwon-do

- Population**
Approximately 290,000
* Approximately 4,000 foreigners (about 1.5%)
- Distance**
1 hour from the metropolitan area
By bus : 1 hour (Seoul-Chuncheon Expressway)
By train : 1 hour (ITX Gyeongchun Line train)
- Characteristics**
Beautiful natural environment, city of tourism, education, culture and festival
*Lego Land, a global theme park, Korea's longest Mt. Samaksan Ropeway, Chuncheon Mime Festival, Chuncheon Puppet Festival, Dakgalbi & Makguksu - Festival, Songam-dong Sports Town, etc.



Current Status

A. Wide and rich learning environment of the national university

Chuncheon Campus (Area 1,001,030m²)



Samcheok Campus (including Dogye I Area 633,163m²)



State-of-the-art lecture rooms/ General lecture rooms 473/533 (89%)



4,533 seats at the library reading rooms



1,610,980 books at the library



B. Convenience to freshmen by allocating comfortable dormitories

Chuncheon	Samcheok	Dogye
Maximum capacity for university dormitories in Gangwon-do (4,386 students)	Accommodating all freshmen	Maximum dormitory occupancy rate (Accommodating 86% of students enrolled in Dogye Campus)

※ For details such as dormitory fee, see XIV. Dormitory Information (P.30)(<https://knudorm.kangwon.ac.kr>)

※ Detailed information of Chuncheon City <https://www.chuncheon.go.kr>, Samcheok City <https://www.samcheok.go.kr/tour.web>

C. First semester scholarships for international students at graduate schools

Scholarship Eligibility (First Semester Only)		Scholarship Amount				
Graduates of sister universities, graduates of Korean language program of Kangwon National University		50% waiver of tuition				
Scholarships for overseas Koreans, Graduates from a general university		40% waiver of tuition				
Tuition Fees for Each Semester (2022)						(Unit: KRW)
College	Humanities & Social Sciences	Natural Sciences	Engineering	Sports Science	Arts	Medicine
Tuition	2,288,000	2,810,000	2,924,000	2,982,000	3,180,000	3,338,000~4,464,000

※ The registration fee and scholarship amount are subject to change depending on the circumstances of the university (For details, refer to XI.Scholarships (P. 27))

D. Various programs for international students

1) Freshman Adaptation Support Program

Category	Details	Period
Early Adaptation Program	- Provision of daily life information necessary for adaptation after the first entry into Korea and opportunities to learn basic laws - Education on basic law and order, information on adaptation to Korean society, immigration-related systems, etc.	February, August
Freshman Orientation	- Provision of essential information necessary for college life in the first semester of admission (Academic affairs, stay in Korea, legal education, library usage guide, etc.)	February, August

2) Job Support Program

Program	Details	Period
Employment Competency Reinforcement Program for International Students	International student employment roadmap and preparation strategy for entering the workforce - Guidance and correction of self-introductions and resumes tailored to job suitability in Korean language - Interview simulation and feedback - Analysis of desired companies and individual consulting (about 20 minutes per student) - Meeting and Q&A with foreign workers in Korea	July - August
Special lecture on employment in connection with Gangwon-do	Employment competency strengthening education for international students in Gangwon-do - Professional career design, how to use job search sites, sharing successful cases of employment for international students, etc.	July - August

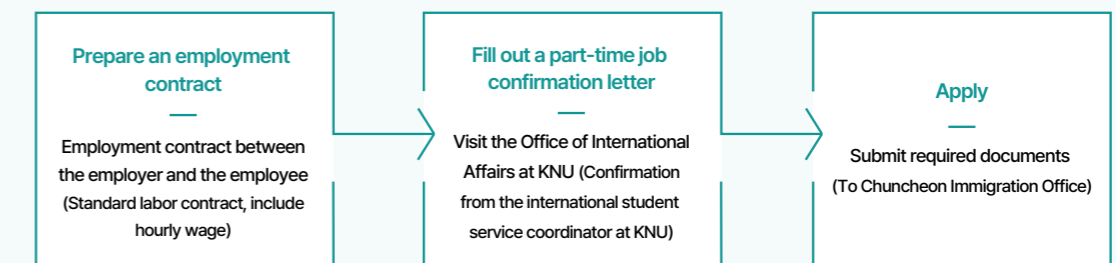
Information on Part-time Employment for International Students

- **Jobs** : Jobs within the scope related to the student’s major and can be conducted in parallel with studies, occupations within the range that the student can normally perform according to social norms.
- **Eligibility** : Applicants who have an average grade of C (2.0) or higher in the previous semester as of the application date and have TOPIK level 4 or higher.
- **Hours** : Within 30 hours per week. (unlimited during school holidays and vacations)

Program	Korean language proficiency level	Allowable hours	
		Weekday	Weekend, Vacation
Master’s/Ph.D.	TOPIK Level 4	O	30 hours / Unlimited
		X	15 hours

• Permit Procedure

(Required to obtain part-time work permit from Chuncheon Immigration Office before starting work)



※ Required documents : Part-time employment confirmation letter, Standard employment contract, Business registration certificate, Transcript, TOPIK certificate

3) Korean Culture Experience Program

Category	Details	Period
Chuncheon City Tour	Chuncheon City Tour for international students	April, November
Bazaar	Bazaar with Kangwon National University faculty and staff (winter coat sharing event, etc.)	April, October
Global Festival	Sports events with international students	May
Traditional Hanbok Experience	Experience traditional Hanbok	May, September
Marine Sports Lesson	Experience marine water leisure sports activities (Visit Samcheok Campus)	July
Folk Village Experience	Experience the Korean Folk Village	September
International Students' Night	Talents show of international students	November
Global Year-end Party	Year-end party with domestic and international students	December

※ The above program is subject to change depending on university circumstances.

4) Korean life adaptation support program

Category	Details	Period
Tutoring Program	- Tutors (Korean students) support Tutees (international students) for overall school life adaptation - 1:1 guidance for majors and liberal arts subjects, Korean language study, and adaptation to school life	Semester 1 (Mar-June) Semester 2 (Sept - Dec)
Card News and Newsletter https://oiaknu.kangwon.ac.kr	Regular provision of necessary university information to international students (Admission, international exchange programs, language programs, scholarship and employment, cultural events inside and outside the university, etc.) * Card News: https://oiaknu.kangwon.ac.kr/oiaknu/oia/card-news.do Newsletter: https://www.kangwon.ac.kr/english/selectBbsNttList.do?bbsNo=347&key=1976&	During the year
Counseling for international students	- Faculty and Staff Mentoring Program (Faculty and staff support international students as mentors for adaptation) - One-on-one counseling by the Office of International Affairs for international students in order to adapt to university life	Each semester
SpeaKo Program	- Korean speaking activities as a group of Korean and international students (up to 4 students) - Set a weekly topic to speak Korean, grammar and pronunciation correction by Korean students	Summer and winter vacations
Writing Center	- Online or face-to-face instruction in Korean writing, including personal statement (Website) https://www.kangwon.ac.kr/kwrc/index.do	During the year
TOPIK preparation class	- Tuition support for TOPIK preparation class in the Division of Language Education at KNU (In addition, graduate students receive a 30% discount on the Korean language course fee of the Division of Language Education at KNU)	Each semester
TOPIK test fee support	- Support: Full test fee (TOPIK level 4 or higher) - How to apply: Submit TOPIK score report within 15 days after the score is announced	During the year
Free Korean Class	- Free Korean language classes offered by Baengnyeong Volunteer Corps - Small-scale, customized classes for each level, Korean speaking, Korean culture experience, etc.	Semester 1 (Mar-June) Semester 2 (Sept - Dec)

※ The above programs are subject to change depending on the university circumstances



Achievements

- A. International Education Quality Assurance System (IEQAS) Designated by the Ministry of Education (March 2022~)
- B. Selection of excellent universities in various domestic and foreign university evaluations

Leap top 20 universities in Korea in various world university evaluations	Selected as the best university in 「Industry Perspective University Evaluation」 for 7 consecutive years
「2022 THE World University Impact Assessment」 ranking 101-200, 6th in Korea 「2022 THE World University Rankings」 ranking 1,201+, 28th in Korea 「2022 THE Asian University Rankings」 ranking 401-500, 28th in Korea 「2022 QS World University Rankings」 ranking 1,001-1,200, 31st in Korea 「2022 QS Asian University Rankings」 ranking 239, 30th in Korea 「2021 ARWU World University Rankings」 ranking 601-700, 19th in Korea 「2022-2023 CWUR World University Rankings」 ranking 735, 22nd in Korea 「2022 THE U.S. News & World Report University Rankings」 ranking 1,122, 25th in Korea 「2021 CWTS Leiden Evaluation」 ranking 1,194, 43rd in Korea	2021 Oil Refining and Chemical Engineerin (Chemical Engineering Major) 2020 Architecture (Construction) field (Architectural Engineering Major, Department of Construction Convergence) 2019 Food field (Food Science and Biotechnology Major) 2018 Biopharmaceutical field (Department of Biomedical Convergence) 2017 Refinery and Petrochemical field (Department of Chemical Engineering) Electronic semiconductor field (Department of Electronic Engineering) Cosmetics field (Department of Herbal Medicine Resources Development) 2016 Architecture (construction) field (Architectural Engineering Major, Department of Urbanism and Architecture) 2015 Food field (Department of Food Science and Biotechnology)
· Selected as the first national university of 「Campus Innovation Park」 (designated as an urban high-tech industrial complex) · Selected as 「Regional innovation project based on local government-university cooperation in 2022」 (Fostering core fields precision medicine, digital healthcare, and smart hydrogen energy)	

II. Application Schedule

Category	Schedule		Note
	2023 Spring	2023 Fall	
Online Application (Internet application)	Nov 10(Thu) 9am ~ Nov 28 (Mon), 2022 6pm	Dec 1(Thu), 2022 9am ~ Apr 10 (Mon), 2023 6pm	English http://www.kangwon.ac.kr/english/ Chinese http://www.kangwon.ac.kr/chinese/ Common http://www.studyinkorea.go.kr
Documents Submission	Nov 10(Thu) 9am ~ Nov 28 (Mon), 2022 6pm	Dec 1(Thu), 2022 9am ~ Apr 10 (Mon), 2023 6pm	※ Scan and upload the original documents on the online application website within the application period. (Admitted applicants who have passed department screening will be required to submit the original documents by post/visit.)
Decision Process (Department Screening)	Dec 8(Thu) ~ Dec 13(Tue), 2022	Apr 27(Thu) ~ May 3(Wed), 2023	※ Document Screening (Members of the departments will decide to pass by comprehensively reviewing the grades(GPA based on transcripts), personal statement and study plan, recommendations by academic advisors from previous schools, major aptitude, and learning and language ability.) ※ Depending on the departments, the applicant may be asked to undertake interviews if necessary. (The video interview will be proceeded for applicants living overseas. The telephone interview may only be conducted by the reason of unavoidable circumstances.)
Announcement of eligible students after department screening	Dec 19(Mon), 2022	May 15(Mon), 2023	※ Individual notification
Submission of Original Academic and Financial Documents	Until Jan 2 (Mon), 2023	Until Jun 2 (Fri), 2023	※ Only applicants who have passed department screening (Submit original documents by post or in person already uploaded to the application system.) ※ If the original documents are not submitted or incomplete, the eligible students will be canceled.
Notification of Acceptance	Jan 13(Fri), 2023	Jun 23(Fri), 2023	※ Announced on the KNU (English, Chinese) Homepage Board (Enter and confirm your date of birth and application number, and be careful not to lose your application number.)
Registration for Admitted Students	Jan 16(Mon) ~ Jan 25(Wed), 2023	Jun 26(Mon) ~ Jul 7(Fri), 2023	※ Guidelines will be provided at the time of the acceptance notification. (If you do not pay tuition within the period, your admission will be canceled.)

※ The above-mentioned schedule may change depending on the operation of academic affairs.

III. Degree Programs

1. Master's Degree Program
2. Ph.D. Degree Program
3. Combined (Master's & Ph.D.) Program

IV. Eligibility for Application

Foreigner whose parents are also foreigners.

The applicant and both his/her parents are foreign nationals.

(Nationality criterion is evidenced only if applicants and both of his/her parents acquire non-Korean nationals on the period before the applicant begins the curriculum corresponding to educational program of Korean high school)

The applicant who has completed (expects to complete) the education courses corresponding to Korea's primary, secondary and tertiary, and college education or recognized as having the equivalent education according to the law.

The applicant who satisfies all the qualifications for application.

(Please refer to Chapter V. Qualifications for Applicants)

V. Qualifications for Applicants

Category	Qualifications				
Common Qualifications	The applicant must satisfy at least one of the language proficiency requirements and conditions listed below.				
	1. Applicants holding level 3 or higher in the Test of Proficiency in Korean (TOPIK) (Certificate must be valid at the time of the date of admission)				
	※ Applicants to the following departments must submit TOPIK level 4 or higher.				
		Campus	College	Departments	Language Proficiency
	Chuncheon		Humanities and Social Science	Department of Economics	TOPIK level 4 or higher
				Department of International Trade	
				Department of Storytelling	
				Department of Visual Culture	
				Department of English Education	
				Department of Political Science	
		Natural Science	Department of Korean Education	TOPIK level 6	
			Department of Horticulture		
			Department of Physics		
			Department of Plant Materials Industry and Science		
		Engineering	Department of Chemical Engineering	TOPIK level 4 or higher	
		Art & Sports	Department of Design		

Category	Qualifications
Common Qualifications	<p>2. Applicants who completed level 4 or higher of the Korean language program at KNU. ※ Certificate of Completion of a Korean Language Course level 5 or higher (at Kangwon National University) can replace TOPIK level 4.</p> <p>3. Applicants with the English Proficiency Test Scores - TOEFL PBT 530, CBT 197, iBT 71(My Best Scores and TOEFL iBT Home Edition scores are accepted; TOEFL ITP scores are not accepted), IELTS 5.5, CEFR B2, TEPS 600(New TEPS 326, TOEIC 700 (Certificate must be valid at the time of the date of admission.) ※ Applicants to the Department of English Education must submit both Korean (TOPIK level 4 or higher) and* English(TOEFL iBT 94, IELTS 6.5, TOEIC 800 or higher) language requirements. The English Proficiency Test Scores will not be accepted by Department of Business Administration, Department of Korean Education, and Department of Design. *and: Applicants must fulfill both Korean and English language requirements to apply for the department.</p> <div style="border: 1px solid black; padding: 5px; margin: 5px 0;"> <p>※ TOEFL MyBest Scores Scheme</p> <ul style="list-style-type: none"> · Sum up the best scores for each area from multiple exams and submit them. · In case of submitting MyBest Scores, only the scores in the 4 areas (Reading, Listening, Speaking, and Writing) within the validity period of the admission date are recognized. </div>
	<p>4. Government invited scholarship students, foreign government supported scholarship students, applicants applying for the Departments in the field of Arts and Sports(Except 'Department of Sport Science', 'Department of Design', 'Department of Visual Design, and 'Department of Physical Education'), Natural Science or Engineering (Except 'Department of Horticulture', 'Department of Physics', 'Department of Plant Materials Industry and Science', and 'Department of Chemical Engineering'), applicants from the countries whose native language is English (US, Canada, UK, South Africa, New Zealand, Australia, Ireland), students enrolled in a bilingual course* (required to complete the Korean language course or to obtain TOPIK level 3 after admission) *Bilingual course: At least 50% of the credits required for graduation are taught in a foreign language other than Korean (or Korean-foreign language interpretation)</p> <p>5. Applicants submitting the Recommendation Letter for Exceptional Researcher by the KNU prospective academic advisor.</p> <p>6. Applicants who expect to take one of the tests or complete the Korean language program mentioned in points 1~3 (The relevant certificate must be submitted by February 17(Fri), 2023 for 2023 Spring semester and August 18(Fri), 2023 for 2023 Fall semester. If not, the acceptance will be canceled.) ※ All the international students admitted to the university must acquire the language certificate required for graduation before applying for the evaluation of dissertation for the degree.</p>
	<p>Master's course Applicants must meet the above common qualifications and hold a bachelor's degree (expected) or equivalent level of education approved by law.</p>
	<p>Doctor's course Applicants must meet the above common qualifications and hold a master's degree (expected) or equivalent level of education approved by law.</p>
<p>Combined course Applicants must meet the above common qualifications and hold a bachelor's degree (expected) or equivalent level of education approved by law.</p>	

※ We verify the authenticity of all the language certificates. Please submit original language certificate.

※ Degrees recognized as qualifications for application are limited to universities officially accredited by the Ministry of Education in the respective country.

VI. Departments and Programs (Supernumerary)

Chuncheon Campus

※ ★ Mark : The language proficiency requirements depending on the departments.

- ★: TOPIK level 4 or higher, or TOEFL(PBT 530, CBT 197, iBT 71), IELTS 5.5, CEFR B2, TEPS 600(NEW TEPS 326), TOEIC 700 or higher
- ★★: TOPIK level 4 or higher and TOEFL iBT 94, IELTS 6.5, TOEIC 800 or higher
- ★★★: TOPIK level 4 or higher (The English Proficiency Test Scores will not be accepted.)
- ★★★★: TOPIK level 6 (The English Proficiency Test Scores will not be accepted.)
- ★★★★★: The English Proficiency Test Scores will not be accepted.

General Graduate School

※ Department Availability: '○' Applicable, 'x' None Applicable

College	Department	Programs		
		Master	Doctoral	Combined
Humanities and Social Science	Department of Business Administration ★★★★★	○	○	○
	Department of Economics ★	○	○	○
	Department of Tourism Administration	○	○	○
	Department of International Trade ★	○	○	○
	Department of Accounting	○	○	○
	Department of Agricultural and Resource Economics	○	○	○
	Department of Storytelling ★	○	×	×
	Department of Visual Culture ★	○	○	○
	Department of Law	○	○	○
	Department of Education	○	○	○
	Department of Korean Education ★★★★★	○	○	○
	Department of Social Education	○	○	○
	Department of English Education ★★	○	○	×
	Department of Cultural Anthropology	○	○	×
	Department of Real Estate	○	×	×
	Department of Sociology	○	○	○
	Department of Media & Communication	○	○	○
	Department of Psychology	○	○	○
	Department of Political Science ★	○	○	×
	Department of Public Administration	○	○	○
Department of Korean Language and Literature	○	○	○	

College	Department	Programs		
		Master	Doctoral	Combined
Humanities and Social Science	Department of German Language and Literature	○	×	×
	Department of French Language and Literature	○	×	×
	Department of History	○	○	○
	Department of English Language and Literature	○	○	○
	Department of Japanese Studies	○	○	○
	Department of Chinese Language and Literature	○	×	×
	Department of Philosophy	○	○	○
	Department of Peace Studies	○	○	○
	Department of Humanities Therapy	○	○	○
	Department of Regional Education Cooperation	○	○	○
Natural Science	Department of Agriculture and Industries	○	○	○
	Department of Biosystems Engineering	○	○	○
	Department of Food Biotechnology and Environmental Science - Major in Biological Environment - Major in Food Science and Biotechnology	○	○	○
	Department of BioResource Sciences - Major in Applied Plant Sciences - Major in Plant Medicine	○	○	○
	Department of Horticulture ★	○	○	○
	Department of Regional Infrastructures Engineering	○	○	○
	Department of Animal Life Science - Major in Animal Resource Science - Major in Animal Industry Convergence	○	○	○
	Department of Applied Animal Science	○	○	○
	Department of Home Economics Education	○	×	×
	Department of Science Education	○	○	○
	Department of Forest Management	○	○	○
	Department of Forest Biomaterials Engineering	○	○	○
	Department of Forest and Environment System - Major in Forest Resources - Major in Forest Environment Protection	○	○	○
	Department of Paper Science and Engineering	○	○	○
	Department of Landscape Architecture	○	○	○

College	Department	Programs		
		Master	Doctoral	Combined
Natural Science	Department of Pharmacy	○	○	○
	Department of Biomedical Science - Major in Molecular Bioscience - Major in Medical Biomaterials Engineering - Major in Systems Immunology - Major in Medical Biotechnology	○	○	○
	- Major in Bio-health Technology	×	○	×
	Department of Integrative Molecular and Biomedical Sciences	○	○	○
	Department of Physics ★	○	○	○
	Department of Bio-Health Technology	○	×	×
	Department of Biological Sciences	○	○	○
	Department of Biochemistry	○	○	○
	Department of Mathematics	○	○	○
	Department of Geophysics	○	○	○
	Department of Geology	○	○	○
	Department of Statistics	○	○	○
	Department of Chemistry	○	○	○
	Department of Environmental Science	○	○	○
	Department of Computer Science	○	○	○
	Department of Bio-Health Convergence	○	○	○
	Department of Plant Materials Industry and Science ★	○	○	○
Engineering	Department of Architecture	○	○	○
	Department of Architectural Engineering	○	○	○
	Department of Advanced Mechanical Engineering - Major in Mechanical and Biomedical Engineering - Major in Mechatronics Engineering	○	○	○
	Department of Data Science	×	×	×
	Department of Industrial Engineering	○	○	○
	Department of Biotechnology and Bioengineering	○	○	○
	Department of Advanced Materials Science and Engineering	○	○	○
	Department of Energy and Resources Engineering	○	○	○
	Department of Chemical Engineering ★	×	×	×
	Department of Civil Engineering	○	○	○

College	Department	Programs		
		Master	Doctoral	Combined
Engineering	Department of Environmental Engineering	○	○	○
	Department of Electrical and Electronics Engineering	○	○	○
	Department of Electronics Engineering	○	○	○
	Department of Computer and Communications Engineering	○	○	○
	Department of Integrated Energy and Infra System	○	○	○
Art & Sports	Department of Performing Art	×	○	×
	Department of Global Cultural Convergence * Bilingual course (Chinese/Korean)	○	○	○
	Department of Design ★★★	○	○	×
	Department of Dance	○	×	×
	Department of Fine Art	○	×	×
	Department of Sport Science	○	○	×
	Department of Music	○	×	×
Medicine	Department of Veterinary Medicine	○	○	○
	Department of Medicine	○	○	○
Interdisciplinary Programs	Interdisciplinary Program in Geoinformatics [Department of Forest Management, Social Education, Landscape Architecture]	○	○	×
	Interdisciplinary Program in Smart Regional Innovation [Department of Social Education, Korean Education, Science Education, Industrial Engineering]	○	○	○
	Department of Education and Humanities Cooperation [Department of Humanities Therapy, Regional Education Cooperation]	○	○	○
	Interdisciplinary Graduate Program in Environmental Management and Policy [Department of Public Administration, Environmental Science, Food Biotechnology and Environmental Science(Major in Biological Environment)]	○	○	○
	Department of BIT Medical Convergence [Department of Biological Sciences, Medicine, Electrical and Electronics Engineering, Electronics Engineering]	○	○	○
	Interdisciplinary Graduate Program in Smart Agriculture [Department of Biosystems Engineering, BioResource Sciences, Horticulture]	○	○	○

College	Department	Programs		
		Master	Doctoral	Combined
Interdisciplinary Programs	Interdisciplinary Graduate Program in Environmental and Biomedical Convergence [Department of Integrative Molecular and Biomedical Sciences, Environmental Science, Industrial Engineering, Medicine]	○	○	○
	Interdisciplinary Graduate Program in Medical Bigdata Convergence [Department of Medicine, Computer Science]	○	○	○
	Department of Smart Health Science and Technology [Department of Advanced Mechanical Engineering, Biotechnology and Bioengineering, Sport Science]	○	○	○
	Interdisciplinary Program in Advanced Functional Materials and Devices Development [Department of Advanced Materials Science and Engineering, Chemical Engineering]	○	○	○
	Department of Integrated Particulate Matter Management [Department of law, Forest and Environment System, Industrial Engineering, Medicine, Environmental Engineering, Environmental Science]	○	○	×

※ The departments available for admission may change according to the conditions of the university.

※ ★ Mark : The language proficiency requirements depending on the departments.

- ★: TOPIK level 4 or higher, or TOEFL(PBT 530, CBT 197, iBT 71), IELTS 5.5, CEFR B2, TEPS 600(NEW TEPS 326), TOEIC 700 or higher
- ★★: TOPIK level 4 or higher and TOEFL iBT 94, IELTS 6.5, TOEIC 800 or higher
- ★★★: TOPIK level 4 or higher (The English Proficiency Test Scores will not be accepted.)
- ★★★★: TOPIK level 6 (The English Proficiency Test Scores will not be accepted.)
- ★★★★★: The English Proficiency Test Scores will not be accepted.



Samcheok Campus

General Graduate School

※ Department Availability: '○' Applicable, '×' None Applicable

College	Department	Programs		
		Master	Doctoral	Combined
Humanities and Social Science	Department of Public Administration	○	○	○
	Department of Tourism Management	○	○	○
	Department of English	○	○	○
	Department of Early Childhood Education	○	○	×
	Department of Regional Economics	○	○	○
	Department of Social Welfare	○	○	○
	Department of Addiction Rehabilitation	○	○	○
Natural Science	Department of Nursing Science	○	×	×
	Department of Food and Nutrition	○	○	○
	Department of Emergency Medical Rehabilitation	○	○	×
	Department of Dental Hygiene	○	×	×
	Department of Occupational Therapy	○	○	○
	Department of Human Health Convergence	○	×	×
Engineering	Department of Architecture and Civil Convergence Engineering	×	○	×
	Department of Architectural Design	○	×	×
	Department of Building System Engineering	○	×	×
	Department of Mechanical-Vehicle Engineering	○	×	×
	Department of Mechanical-Computer-Industrial and Management Engineering	×	○	×
	Department of Materials Science and Engineering	○	○	○
	Department of Urban Regeneration Convergence	○	○	○
	Department of Software and Media Engineering	○	×	×
	Department of Fire and Disaster Prevention Engineering	○	×	×
	Department of Convergence Engineering for Hydrogen Energy	○	○	○

College	Department	Programs		
		Master	Doctoral	Combined
Engineering	Department of Energy and Mineral Resources Engineering	○	×	×
	Department of Energy and Chemical Engineering	○	○	○
	Department of Materials and Metallurgical Engineering	○	×	×
	Department of Electrical Engineering	○	×	×
	Department of Electronics, Information and Communication Engineering	○	○	○
	Department of Control and Instrumentation Engineering	○	×	×
	Department of Earth and Environmental Engineering	○	○	○
	Department of Civil and Construction Engineering	○	×	×
	Department of Visual Design	○	×	×
Art & Sports	Department of Physical Education	○	○	○

※ The departments available for admission may change according to the conditions of the university



VII. Application Procedure

Evaluation Criteria and Distribution of Marks

Type of college	Evaluation Criteria	Document Screening	Performance Test
General College		○	-
Department of Music		○	○

Department Screening

A. Period : 2023 Spring semester(Dec 8(Thu), 2022 ~ Dec 13(Tue), 2022)
2023 Fall semester(Apr 27(Thu), 2023 ~ May 3(Wed), 2023)

B. Method : Document Screening (Members of the departments will decide to pass by comprehensively reviewing the grades(GPA based on transcripts), personal statement and study plan, recommendations by academic advisors from previous schools, major aptitude, and learning and language ability)
※ Depending on the departments, the applicant may be asked to undertake interviews if necessary.

C. Applicants will be individually notified of date and place for interviews, if necessary.

- ※ The video interview(or in-person interview) will be proceeded for applicants.
(The telephone interview may only be held for the reason of unavoidable circumstances.)
- ※ Applicant's contact information(Email and phone number) cannot be changed after application documents submission. The applicant must provide his/her contact information when he/she submits the application documents on the online application website.
- ※ If phone or video interview is not connected more 3 times, it deals with absent.

Department of Music (Masters) Performance of Test Pieces

Major	Test Pieces	Note
Composition	Submit 2 pieces (USB) (The type of sound, video, or score)	
Piano	1. Play entire movements of 1 Sonata or the piece of music with a similar scale (15 minutes or more) 2. A free-choice of music with about 7 to 15 minutes, excluding Etude	
Voice	1. Aria (include oratorio) 2 pieces 2. French song- 1piece 3. German song- 1piece	Sing 4 songs selected freely solo
String Music	Play 1 piece of your choice (rapid movement)	
Pipe Music	Play 1 piece of your choice (rapid movement) ※ In case of percussion instrument, you must play 1 piece of each snare drum, marimba (or xylophone). Do not bring your own instruments.(Applicants can bring their own snare drums.)	

VIII. Application Submission and Required Documents

Application Submission (Online Application)

A. Period (Korea Standard Time)

- 1) 2023 Spring Semester : November 10(Thu) at 9am ~ November 28(Mon), 2022 at 6pm
- 2) 2023 Fall Semester : December 1(Thu), 2022 at 9am ~ April 10(Mon), 2023 at 6pm

B. Online Application

Link to proxy site for application will be published on the above KNU home pages.

※ The online application site is available only in Microsoft Edge and Google Chrome browsers under Windows operating systems.

Chuncheon · Samcheok Campus	English	http://www.kangwon.ac.kr/english/
	Chinese	http://www.kangwon.ac.kr/chinese/

C. Submission Procedure

Enter required information → Pay application fee → Check completed application form

※ Applicants are not allowed to change the desired degree course/program/major, or withdraw their application after completion of application (application fee payment).

Application Fee

KRW 50,000 (including online application fee), pay through application program

- ※ There will be no waivers or refunds of application fee in accordance with Article 42-3 (Admission Fees) of the Enforcement Decree of the Higher Education Act.
- ※ Only applicants who have paid the application fee will be accepted.

Documents Submission

Scan and upload the original documents on the online application website within the application period. (Admitted applicants who have passed department screening will be required to submit the original documents by post/visit.)

- ※ Submit scanned PDF files maximum 8MB for each item
- Combine and submit one file per item.
- Submission of documents that cannot be identified (encrypted files, files that cannot be opened, etc.) are considered unsubmitted, so be sure to check them after uploading.
- ※ If it is difficult to verify the facts with only the submitted documents, the university may request the necessary documents separately.
- ※ You may modify the contents of the application form, excluding the program and the department, before the application deadline. (You can edit personal information, personal statement, study plan, etc. and re-upload scanned files).

Address

A. Chuncheon Campus

Office of International Affairs, Kangwon National University,
1 Gangwondaehak-gil, Chuncheon-si, Gangwon-do, 24341, Republic of Korea.

B. Samcheok Campus

Department of Operating Planning, Green Energy Research Center 910, Kangwon National University,
Samcheok campus 346 Joongang-ro, Samcheok-si, Gangwon-do 25913, Republic of Korea.

Required Documents

List of Required Documents	Programs			Notes	
	Masters	Doctoral	Combined		
1. Application form - Fill out the online application website (Korean or English) - Name (English name) and date of birth must match the passport	<input type="radio"/>	<input type="radio"/>	<input type="radio"/>	Form 1	
2. A copy of college graduation (expected) certificate	<input type="radio"/>	<input type="radio"/>	<input type="radio"/>		
3. A copy of graduate school graduation (expected) certificate		<input type="radio"/>			
4. A copy of college transcript, including the grading scheme/scale legend (original and authenticated copy respectively) - In case of transfer, submit the transcript of the previous university	<input type="radio"/>	<input type="radio"/>	<input type="radio"/>		
5. A copy of graduate school transcript, including the grading scheme/scale legend (original and authenticated copy respectively)		<input type="radio"/>			
6. A copy of a personal statement and study plan - Fill out the online application website (Korean or English) - Write within 4,000 bytes including spaces for each item (about 2,000 Korean characters, about 800 English words)	<input type="radio"/>	<input type="radio"/>	<input type="radio"/>	Form 2	
7. Language Proficiency (Select 1)	- A certificate copy of TOPIK level 3 and above	<input type="radio"/>	<input type="radio"/>	<input type="radio"/>	
	- A copy of completion certificate for the KNU Korean language program level 4 and higher	<input type="radio"/>	<input type="radio"/>	<input type="radio"/>	
	- A copy of English proficiency certificate	<input type="radio"/>	<input type="radio"/>	<input type="radio"/>	
	- A copy of confirmation to submit the language proficiency certificate (applicable only for the applicant who did not submit language score)	<input type="radio"/>	<input type="radio"/>	<input type="radio"/>	Form 3
	- A Recommendation Letter for Exceptional Researcher by the KNU Prospective Academic Advisor. For the applicant who has not submitted a certificate of language proficiency.	<input type="radio"/>	<input type="radio"/>	<input type="radio"/>	Form 4
8. A copy of a letter of recommendation written by the dean of graduated college or academic advisor (A copy of career certificate in case of an employer) ※ The dean of graduated college or academic advisor must upload the letter of recommendation on the online application website or email it at enter@kangwon.ac.kr ※ Write the recommender's e-mail address of institution he/she works for (Example: ___@kangwon.ac.kr) - When you pay the application fee, an e-mail to write a recommendation letter is automatically sent to the recommender designated by the applicant. - After submitting the letter of recommendation, you cannot change the recommender and the recommender's email address.	<input type="radio"/>	<input type="radio"/>	<input type="radio"/>		
9. Letter of consent for academic background check - Students who graduated from KNU are allowed to omit it.	<input type="radio"/>	<input type="radio"/>	<input type="radio"/>	Form 5	

List of Required Documents	Programs			Notes
	Masters	Doctoral	Combined	
10. A copy of passport - Submit a copy of the passport with at least 6 months left before expiration (based on the date of admission) - Students of Uzbekistan nationality must submit an 'international passport' that can be used when departing abroad.	<input type="radio"/>	<input type="radio"/>	<input type="radio"/>	
11. A copy of alien registration card (only for applicants living in Korea.)	<input type="radio"/>	<input type="radio"/>	<input type="radio"/>	
12. A copy of ID cards of the applicant and parents respectively.	<input type="radio"/>	<input type="radio"/>	<input type="radio"/>	
13. Each of an original and translated copy of the Family Relation Certificate issued by the government organization ※ Submit the issuance documents within 6 months from the date of submission. - A Chinese applicant must submit an original and a translated copy of the Family Register (with the names of family members written in English). - If the Family Register is divided by more than two, submit the additional document of the Certificate of Kinship. - In case of death (divorce) of parents, submit death (divorce) certificate and translation.				
Examples of documents proving family relationship				
China	Notarized copy of family register or kinship certificate + copy of family register			
Philippine	Family Census			
Indonesia	Family Relations Certificate (KARTU KELUARGA)			<input type="radio"/>
Bangladesh	Jummer kkakkeoj or Jumma saidticket			
Vietnam	Family register(So Ho Khau) or birth certificate(Giay Khai sinh)			
Mongolia	Kinship certificate			
Pakistan	Family Registration Certificate (FRC)			
Sri Lanka	Ppauler Certificate			
Myanmar	Family Relations Certificate (Ying Taung Su Sayen)			
Nepal	Jeonmadalda			
Kyrgyzstan, Kazakhstan, Uzbekistan, Ukraine, Thailand, India	Birth Certificate			
- Students who graduated from KNU are allowed to omit it.				

List of Required Documents	Programs			Notes
	Masters	Doctoral	Combined	
14. Performance Test (Department of Music) - Composition: Two composition pieces (Recorded USB) - Piano, Voice, String Music, Pipe Music: Performance video files or DVD ※ For applicants living abroad: Email applicant's performance test files at enter@kangwon.ac.kr	○			
15. Department of Fine Art, Department of Design - Achievements (Portfolio): Submit a USB ※ Submitted achievements (portfolio) will not be returned. ※ If you submit an e-mail from overseas, the address is: enter@kangwon.ac.kr	○	○		
16. A copy of a financial statement (Only for admitted applicants who have passed department screening) - A bank statement (the amount must be deposited until D-2 visa approval) of the financial sponsor (father/mother) or the applicant verifying the deposit amount of 18,000 US dollars and more or a certificate of remittance or a certificate of currency exchange. ※ The Uzbek applicant who is staying Uzbekistan must submit KDB bank statement. ※ The financial statement must be issued within 30 days from the date of submission - A foreign applicant living in Korea at the time of applying must submit the Korean bank statement.	○	○	○	Form 6
17. A copy of the financial sponsor's employment certificate (Only for admitted applicants who have passed department screening) - It is not necessary when the financial statement is of the applicant. - If the financial sponsor is a foreign national, information must be provided as to his/her employer, position, monthly salary and employer's contact information.	○	○	○	

- ※ Original document: A document issued by the relevant organization and sealed by the person in charge or an official seal
- ※ Notarized original translation: Documents that have been translated into Korean or English by a government-accredited notary and have been notarized and sealed.
 - If the original document is not in Korean or English, a notarized Korean or English translation and the original document must be submitted together.
- ※ The original documents must be submitted, and in the case of documents that cannot be reissued, the original copy must be verified by the issuing agency, or an original document must be notarized by the government-accredited notary.



※ Admitted students must submit the additional document certifying their academic background, including a degree. (Select 1 option from below)

Category	Documents
Common Documents	<ul style="list-style-type: none"> • Documents submission: The official college/university certificate of graduation and academic transcripts, including the grading scheme/scale legend. • Issuing organization: Office of the College/University Registrar from all colleges/universities applicants have attended • How to submit: Certificates must be mailed directly from a Registrar's office each institution applicant attended to the Office of International Affairs at Kangwon National University. (Certificates from schools outside the Korea must be in English or in the native language, accompanied by official English translations.) ※ Request one official certificate from each educational institution you have attended. It is applicant's responsibility to contact each institution to request that certificates be sent to the Office of International Affairs by the appropriate deadline. * By post: A certificate is official when it is in a sealed school envelope and it bears the authorizing school signature and the official seal of the issuing institution. Indicate your application number in the envelope. ※ Mailing address(Official documents should be submitted to:) Chuncheon Campus Office of International Affairs, Kangwon National University, 1 Gangwondaehak-gil, Chuncheon-si, Gangwon-do, 24341, Republic of Korea Samcheok Campus Department of Operating Planning, Green Energy Research Center 910, Kangwon National University, Samcheok campus 346 Joongang-ro, Samcheok-si, Gangwon-do 25913, Republic of Korea *Email: Indicate your application number in the subject line. Emails with attached certificates must be sent via an institutional email address belonging to the appropriate office/department/unit that is in charge of academic document issuance or verification.(Include sender name, department, job title, and contact information at the bottom of the email). The email address must be associated with the sending institution. Certificates sent from Hotmail, Gmail, Yahoo, or other generic email provider will not be accepted. A college/university official can email certificates to enter@kangwon.ac.kr
	<ul style="list-style-type: none"> • Document: "Apostille" of graduation certificate • Issuing organization: The organization that the relevant government designated (Ministry of Foreign Affairs for Korea) * For more information on to the Apostille related organization by country, please refer to www.hcch.net - Members & Parties - HCCH Members (Specialized sections-Apostille Section)
Students from a country that participates in the Apostille Convention	

Category	Documents
Students from a country that does not participate in the Apostille Convention	<ul style="list-style-type: none"> • Document : A certificate for academic background verified by the consulate • Issuing organization : South Korean diplomatic offices (embassies or consulates) located in the relevant country or relevant country's embassies or consulates in Korea
Students who gained their academic background/degree in China	<ul style="list-style-type: none"> • Document : Online Verification Report • Issuing organization : China Academic Degrees and Graduate Education Development Center under the Chinese Ministry of Education (www.chsi.com.cn) • Acceptable expiration date : 2023 Spring Semester(March 31(Fri), 2023) 2023 Fall Semester(September 29(Fri), 2023)
Submission period	<p>2023 Spring Semester : February 24(Fri), 2023 2023 Fall Semester : August 25(Fri), 2023 (Submit only originals; unless we receive the original documents, admission will be canceled.)</p>

※ In case of students who received their degree from a Korean university, there is no need for official verification (Submit your copy of college diploma instead).
 ※ Provisional Certificates issued in some countries are not accepted as proof of final academic achievement.



IX. Notification of Acceptance and Enrollment

Notification of Acceptance

- A. Date : 2023 Spring Semester(Jan 13(Fri), 2023), 2023 Fall Semester(Jun 23(Fri), 2023)
- B. Place : KNU website (English, Chinese)

Payment of Tuition Fee

- A. Enrollment Period : KNU website (English, Chinese)
 - 1) 2023 Spring Semester: January 16(Mon), 2023 ~ January 25(Mon), 2023
 - 2) 2023 Fall Semester: June 26(Mon), 2023 ~ July 7(Fri), 2023

- B. Payment Method : KNU website (English, Chinese)
Information of payment method will be provided together

Refund of Tuition Fee

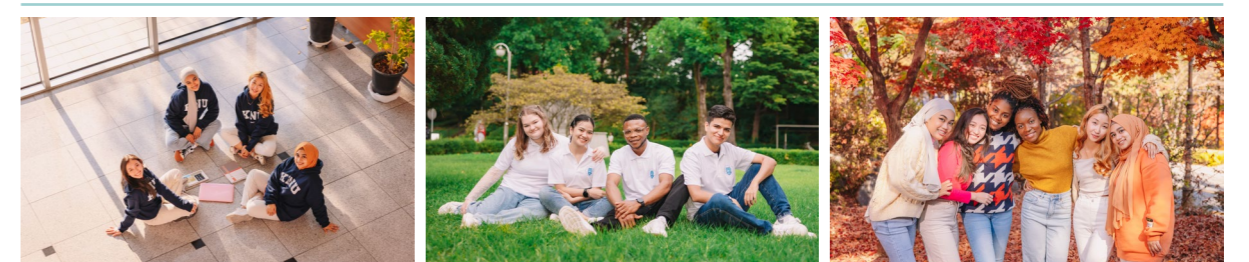
- A. The tuition fee is returned according to the university regulations if the applicant has to unavoidably with draw from admission before the date of matriculation or due to the rejection of visa.
- B. Submit the tuition refund application to the applied campus (Office of International Affairs for Chuncheon Campus, Office of International Relations for Samcheok Campus).

Tuition Fees (based on the amount for a freshman for Fall 2022)

(Unit: KRW)

College	Humanities & Social Sciences	Natural Sciences	Engineering	Sports Science	Arts	Medicine	Bilingual courses	Notes
Tuition	2,288,000	2,810,000	2,924,000	2,982,000	3,180,000	3,338,000~ 4,464,000	Around 3,500,000	Includes the admission fee and tuition fee

※ The amount above may change according to the conditions of the university



X. Important Notice to Applicants

- 1 All documents must be the original copies written in either **Korean or English**. Korean or English translation must be attached to documents written in other languages.
- 2 If it is impossible to submit the original copy, the copy checked against the original certificate by the issuing organization or authenticated copy must be submitted. (If the original copy was submitted, it will be returned after it is checked against the copy.)
- 3 If there is falsified information on the application, etc. or the submitted documents are incomplete at the time of the document screening (step 1), the applicant is considered to have “failed” and will be excluded from the admissions process.
- 4 **The admission may be rescinded even after being admitted** if the applicant is later discovered to have applied through **illegal means such as false or counterfeit materials, and the tuition fee will not be refunded.**
- 5 The admission scores are not released and the submitted documents (materials) will not be returned.
- 6 The application cannot be changed or cancelled after submission. Please be careful when filling out the online application for any inadequacies due to erroneous, omitted or inaccurate information are entirely applicant’s responsibility.
- 7 The admitted student must pay the tuition fee within the specified period and both the acceptance and the admission will be cancelled for no payment.(Tuition Fee Payment in installments for the first semester is not allowed.)
- 8 The conditionally admitted prospective graduate must submit the graduation certificate **by February 24(Fri), 2023 for 2023 Spring Semester and August 25(Fri), 2023 for 2023 Fall Semester**, and if not, **both the acceptance and admission will be canceled.**
- 9 The standard certificate of admission will be sent to the student who has to apply for the visa to stay abroad.
- 10 If the accepted student has to withdraw from admission for unavoidable reasons, the paid tuition fee may be refunded according to the university regulations.
※ **In the case of new students, you must waive registration before the admission date to receive a full tuition refund.**
(However, if there is a reason for the refund of the tuition fee after the date of admission, the admission fee is non-refundable)
- 11 **According to National Health Insurance Act all international students will be compulsory insured by National Health Insurance starting from March 2021.** We strongly recommend admitted students to buy accident insurance effective from the date of entering Korea in preparation for possible accidents or illnesses which are not wholly covered by the national insurance. ※ **National Health Insurance : Website <https://www.nhis.or.kr/nhis/index.do> Tel: +82-33-811-2000**
- 12 The financial supporter must be the applicant, his/her father or mother, with the exception of BEST-KNU scholarship students.
- 13 Other matters not specified are decided by the “Admission Committee.”
- 14 Admission guidelines are written in Korean, English and Chinese, if there are any interpretation differences, Korean version will be treated as interpretation criterion.
- 15 If it is difficult to verify the facts with only the documents submitted by the applicant, additional necessary documents may be requested. Failure to submit the required documents will result in disqualification.
- 16 Applicant’s personal information will not be used or provided for any purpose other than the following, and personal information will be legally disposed of after the personal information retention period has elapsed.
(However, in the case of final registrants, it is used as academic data.)

□ Collection and use of personal information (required)

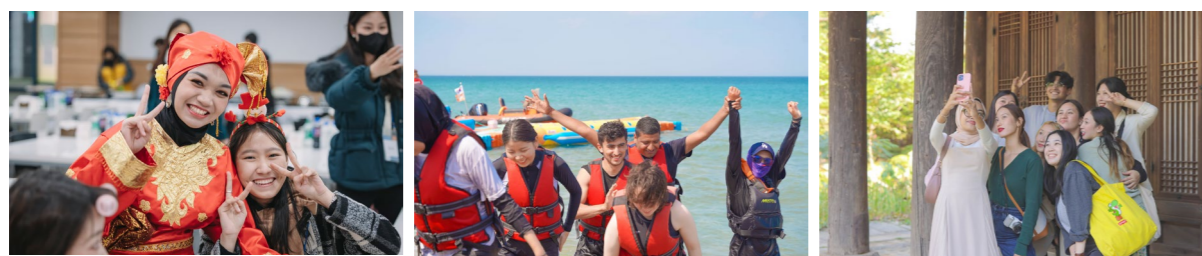
1. **Kangwon National University collects and uses the following personal information of applicants for the admissions process for graduate school as follows.**
 - Applicant information: name, alien registration number, passport number, address, (mobile) phone number, email, bank account number
 - School information: academic background, school from which the applicant graduated, year of graduation (expected), study abroad and period of stay
 - Occupational information: Occupational matters (job classification, etc.)
 - Others: Language proficiency scores, letters of recommendation, etc.
2. **The collected personal information is never used for any purpose other than admissions, scholarships, bachelor's, statistics, course application guidance, visa and residence management, and dormitory.**
When personal information becomes unnecessary, such as when the retention period (10 years) has elapsed or the purpose of processing has been achieved, the personal information is destroyed without delay.



XI. Scholarships

New Student	<p>1. Special Scholarship (only in the first semester)</p> <ul style="list-style-type: none"> - Non-sister university student : Approximately 40% of school fees exemption - Sister university student : Approximately 50% of school fees exemption - A student who attended Korean course at KNU Korean Language Program and holds TOPIK Level 3 or a student who completed Korean course Level 4 at the KNU Korean Language Program : Approximately 50% of school fees exemption (However, student must have studied at KNU Korean Language Program for at least 6 months and his/her attendance rate must have been 80%(during whole study period) or higher) - Scholarship for overseas Korean: for students applying through the Korean-Homeland Education(K-HED) Program : 35% waiver on the tuition fee <p>2. BEST-KNU Scholarship</p> <ul style="list-style-type: none"> - Those admitted as a BEST-KNU Scholarship student - Full scholarship for the first semester (including insurance)
Enrolled Student	<p>1. Academic Achievement Scholarship</p> <ul style="list-style-type: none"> - For a student who has acquired more than 6 credits with the GPA of 3.5 and higher in the previous semester - For a student who has acquired more than 80% of the graduation credits required by the university with the GPA of 4.0 or higher in the previous semester - Approximately 40% of school fees exemption <p>2. BEST-KNU Scholarship</p> <ul style="list-style-type: none"> - Those admitted as a BEST-KNU Scholarship student - For a student who has acquired more than 6 credits with the GPA of 3.5 and higher in the previous semester - For a student who has acquired more than 80% of the graduation credits required by the university with the GPA of 4.0 or higher in the previous semester - Full scholarship(including insurance)

※ In order to receive the scholarship, students must meet the above scholarship qualifications and, according to No. 11 of X. Important Notice to Applicants, they must hold an accident insurance.
 ※ The number of recipients and the amount of exemption for the <Academic Achievement Scholarship> can change according to the budgetary circumstances.



XII. Evaluation Procedure

- 1 The applicants are evaluated by the 3 members of the Admissions Committee by department(major).
- 2 If an applicant is assigned “very unsatisfactory” mark in any evaluation category by two members of the Admissions Committee, that applicant will be considered “disqualified” from the university admission process.
- 3 The applicants must present the degree awarded by the previously attended college. (Confirm identification)
 - Applicants for the master’s program: Bachelor’s degree (Applicants of course completion will not be accepted.)
 - Applicants for the doctoral program: Master’s degree (Applicants of course completion will not be accepted.)
- 4 In the following cases applicant will be excluded from the screening.
 - Failure to meet the requirements and qualifications
 - Failure to submit any of the required documents
 - Failure to be performance tested

XIII. Korean Language Program

Program Introduction

The Korean Language Program at the Division of Language Education of Kangwon National University targets the foreigners who wish to study Korean systematically. In particular, it offers the best learning environment for the students who aim to enter into the undergraduate or graduate school in Korea. The program is structured to naturally familiarize the foreign students with Korean culture in addition to the Korean language study by providing various opportunities to experience culture. Consisting of 6 levels, the Korean Language Program is open in spring, summer, fall and winter. The level test is conducted for the freshmen to study at the appropriate level.

Qualification

A high school or higher level education graduate, or the one with an equivalent education level.

Program Schedule

Semester	Period	Placement Test	Application Period (Need to issue D-Visa)	Application Period (No need to issue D-Visa)	
2023	Spring	Mar. 13 ~ May. 19	Mar 2	~ Feb 2	~ Mar 2
	Summer	Jun. 5 ~ Aug. 11	May 25	~ Apr 27	~ May 25
	Fall	Sep. 11 ~ Nov. 17	Aug 31	~ Aug 3	~ Aug 31
	Winter	Dec. 4 ~ Feb. 8, 2024	Nov 23	~ Oct 26	~ Nov 23

※ The schedule may change according to the conditions of the Division of Language Education.

Application Method

A. Chuncheon Campus

- The completed application and required documents should be submitted via mail
- Address: Division of Language Education, Kangwon National University Kangwondahak-gil 1, Chuncheon-si, Gangwon-do 24341, Republic of Korea
- Website: <http://language.kangwon.ac.kr>
- Inquiry: +82-33-250-7153, 250-7156 / - Fax: +82-33-259-5692
- E-mail: langcntr@kangwon.ac.kr
- Office: #210 Office of International Affairs (Building no.212)

B. Samcheok Campus

- The completed application and required documents should be submitted via mail
- Address: Division of Operating Planning, Kangwon National University, Samcheok campus 346 Joongang-ro, Samcheok-si, Gangwon-do 25913, Republic of Korea
- Website: <http://www.kangwon.ac.kr/english/contents.do?key=1425&>
- Inquiry: +82-33-570-6891~2
- E-mail: applyknu@kangwon.ac.kr

Required Documents

A. It is preferable to fill out and submit the application (application and personal statement, study plan, admission certificate application form) in MS-word file. (Use the form on the website)

B. A copy of passport

C. Graduation Certificate from the most recent attended school (must be certified by APOSTILLE or Korea embassy in your country)

- Students who gained their academic background/degree in China must submit the additional document(certified by their academic background from China Academic Degrees and Graduate Education Development Center under the Chinese Ministry of Education)

D. Final Academic Transcript (must be certified by APOSTILLE or Korea embassy)

E. A copy of each family member's ID card

- Chinese applicant must submit a copy of Household Register, and the one translated in Korean or English.

F. An original, copy and Korean translation of the Family Register respectively

G. An authenticated copy of the Certificate of Kinship and Korean translation

- ※ If the bank statement is of the applicant, the Certificate of Kinship is not required.

H. Finance related documents

- Reference and bank statement
- ※ The bank statement of the financial sponsor(parents) or the applicant with the deposit of over 10,000 US dollars or above (issued within a month)
- ※ When you submit the bank statement of your parents, you are also required to submit certificate of family relations and the proof of employment.
- ※ [Mongolian, Vietnamese, and Uzbekistan] must submit 3 months transaction history [Uzbekistan] KDB Bank [Vietnamese] WOORI Bank

I. A copy of the translator's certificate (the form is downloadable from the website) and ID card

J. Three photos (Passport photo, 3.5×4.5cm, white background, within 6 months)

K. Application fee : 70,000 KRW (non-refundable)

Notes

The recruitment of students is carried out separately by the campus.

XIV. Dormitory Information

Application and assignment

A. When filling out the admissions application form, tick whether you wish to enter a dormitory

- * Separately apply for vacation period
- ※ If you do not apply, you will not be able to enter the dormitory.

B. Dormitory building and room allocation is random

Dormitory information (based on the second semester of 2022)

A. Chuncheon Dormitory (<http://knudorm.kangwon.ac.kr/>)

Dormitory Building	Room Type	Cost Per Person, Per Semester (4months) *KRW	Note
Saerom-gwan(Round 1 BTL)	2-beds	603,490	
Yirum-gwan (Round 2 BTL)	2-beds	640,770	
Global Dormitory [Building No. 415] (Exclusive for international students)	2-beds	632,260/ Deposit 100,000	Equipped with cooking facilities
	Family	1,822,820/ Deposit 150,000	
Yeji-won	2-beds	519,530	
Dasan-gwan	2-beds	519,530	
Toegye-gwan	3-beds	465,080	
Nanji-won	3-beds	465,080	
Gukji-won	3-beds	465,080	
International Dormitory [Building No. 416]	2-beds	720,730	

- ※ For meals, use the Yirum or Saerom restaurant (Meal selection - Type 1: 3,960 won, Type 2: 3,740 won, If you don't select, 4,600 won for each meal)
- ※ Utilities and meal expenses are subject to change depending on university circumstances.

B. Samcheok Dormitory (<http://dormitory.kangwon.ac.kr/>)

Dormitory Building	Room Type	Cost Per Person, Per Semester (4months) *KRW	Note
Haesol-gwan	2-beds	895,280	
Duta-gwan	6-beds	747,500	
Eonjang-gwan	2-beds	701,560	

- ※ Meal fees are optional, and 3,000 won per meal

C. Dogye Dormitory (<http://dorm.kangwon.ac.kr/>)

Dormitory Building	Room Type	Cost Per Person, Per Semester (4months) *KRW	Note
Gaon-gwan	2-beds	923,780	
Dowon-gwan	6-beds	749,700	
Hwangjo-gwan	2-beds	849,270	
Hwangjo-gwan	3-beds	778,480	

- ※ Meal fees are optional, and 2,110 - 2,380 won per meal

Information on the Website and Phone Number of Departments

Chuncheon Campus

College	Departments	Website	Phone (+82-33-250-)
Humanities and Social Science	Department of Business Administration	https://biz.kangwon.ac.kr	6140
	Department of Economics	https://economics.kangwon.ac.kr/economics	6120
	Department of Tourism Administration	https://tourism.kangwon.ac.kr/tourism	6160
	Department of International Trade	https://itb.kangwon.ac.kr/trade	6180
	Department of Accounting	https://account.kangwon.ac.kr/account	6170
	Department of Agricultural and Resource Economics	https://agecon.kangwon.ac.kr/agecon	8660
	Department of Storytelling	https://vculture.kangwon.ac.kr/vculture	8750
	Department of Visual Culture	https://vculture.kangwon.ac.kr/vculture	8750
	Department of Law	https://law.kangwon.ac.kr/law/index.do	6510
	Department of Education	https://cms.kangwon.ac.kr/edu	6650
	Department of Korean Education	https://kedu.kangwon.ac.kr/koredu	6610
	Department of Social Education	https://ssedu.kangwon.ac.kr/ssedu	6710
	Department of English Education	https://engedu.kangwon.ac.kr/engedu	6630
	Department of Cultural Anthropology	https://anthro.kangwon.ac.kr/anthro	6870
	Department of Real Estate	https://re1978.kangwon.ac.kr/re1978	6830
	Department of Sociology	https://sociology.kangwon.ac.kr/sociology	6860
	Department of Media & Communication	https://media.kangwon.ac.kr/masscom/index.do	6880
	Department of Psychology	https://psych.kangwon.ac.kr/psych	6850
	Department of Political Science	https://politics.kangwon.ac.kr/politics	6840

College	Departments	Website	Phone (+82-33-250-)	
Humanities and Social Science	Department of Public Administration	https://padm.kangwon.ac.kr/padm	6810	
	Department of Korean Language and Literature	https://korean.kangwon.ac.kr/korean	8120	
	Department of German Language and Literature	https://german.kangwon.ac.kr/german	8160	
	Department of French Language and Literature	https://france.kangwon.ac.kr/france	8170	
	Department of History	https://knuhisto.kangwon.ac.kr/knuhisto	8210	
	Department of English Language and Literature	https://english.kangwon.ac.kr/english	8140	
	Department of Japanese Studies	https://japan.kangwon.ac.kr/kw	8250	
	Department of Chinese Language and Literature	https://chinese.kangwon.ac.kr/chinese	8180	
	Department of Philosophy	https://kwphilo.kangwon.ac.kr/kwphilo	8230	
	Department of Peace Studies	https://peacestudies.kangwon.ac.kr/peacestudies	8190	
	Department of Humanities Therapy	https://multimajor.kangwon.ac.kr/multimajor/future/major-intro.do	7252	
	Department of Regional Education Cooperation	http://keri.kangwon.ac.kr	7256	
	Natural Science	Department of Agriculture and Industries	https://cli.kangwon.ac.kr/cli	7773
		Department of Biosystems Engineering	https://bse.kangwon.ac.kr/bse	6490
Department of Food Biotechnology and Environmental Science - Major in Biological Environment - Major in Food Science and Biotechnology		https://dbe.kangwon.ac.kr/dbe https://foodtech.kangwon.ac.kr/foodtech	6440 6450	
Department of BioResource Sciences - Major in Applied Plant Sciences - Major in Plant Medicine		https://appliedplant.kangwon.ac.kr/appliedplant https://applybio.kangwon.ac.kr/applybio	6410 6430	

Chuncheon Campus

College	Departments	Website	Phone (+82-33-250-)
Natural Science	Department of Horticulture	https://horti.kangwon.ac.kr/horti	6420
	Department of Regional Infrastructures Engineering	https://aed.kangwon.ac.kr/aed	6460
	Department of Animal Life Science	https://aniscience.kangwon.ac.kr/aniscience https://animal.kangwon.ac.kr/animal	8610
	- Major in Animal Resource Science		8620
	- Major in Animal Industry Convergence		
	Department of Applied Animal Science	https://applanimalsci.kangwon.ac.kr/applanimalsci	8630
	Department of Home Economics Education	https://homecs.kangwon.ac.kr/homecs	6740
	Department of Science Education	https://sciedu.kangwon.ac.kr/sciedu	6730
	Department of Forest Management	https://fm.kangwon.ac.kr/fm	8330
	Department of Forest Biomaterials Engineering	https://wood.kangwon.ac.kr/wood	8320
	Department of Forest and Environment System	https://forestry.kangwon.ac.kr/forestry https://fep.kangwon.ac.kr/fep	8310
	- Major in Forest Resources		8360
	- Major in Forest Environment Protection		
	Department of Paper Science and Engineering	https://paper.kangwon.ac.kr/paper	8350
	Department of Landscape Architecture	https://lands.kangwon.ac.kr/lands	8340
	Department of Pharmacy	https://pharmacy.kangwon.ac.kr/pharmacy	6910
	Department of Biomedical Science	https://molscien.kangwon.ac.kr/molscien https://bme.kangwon.ac.kr/bme https://si.kangwon.ac.kr/si https://dmbt.kangwon.ac.kr/dmbt	8540
	- Major in Molecular Bioscience		6560
	- Major in Medical Biomaterials Engineering		8380
	- Major in Systems Immunology		6480
- Major in Medical Biotechnology			

College	Departments	Website	Phone (+82-33-250-)	
Natural Science	- Major in Bio-health Technology	https://bio-health.kangwon.ac.kr/bio-health	6470	
	Department of Integrative Molecular and Biomedical Sciences	https://molscien.kangwon.ac.kr/molscien	8540	
	Department of Physics	https://physics.kangwon.ac.kr/physics	8460	
	Department of Bio-Health Technology	https://bio-health.kangwon.ac.kr/bio-health	6470	
	Department of Biological Sciences	https://biology.kangwon.ac.kr/biology	8520	
	Department of Biochemistry	https://biochem.kangwon.ac.kr/biochem	8510	
	Department of Mathematics	https://math.kangwon.ac.kr/math	8410	
	Department of Geophysics	https://geophysics.kangwon.ac.kr/geophysics	8580	
	Department of Geology	https://geology.kangwon.ac.kr/geology	8550	
	Department of Statistics	https://statistics.kangwon.ac.kr/statistics	8430	
	Department of Chemistry	https://chemistry.kangwon.ac.kr/chemistry	8480	
	Department of Environmental Science	https://ecoenv.kangwon.ac.kr/ecoenv	8570	
	Department of Computer Science	https://cse.kangwon.ac.kr/cse	8440	
	Department of Bio-Health Convergence	https://bk21.kangwon.ac.kr/edu/biohealth	6470	
	Engineering	Department of Architecture	https://architecture.kangwon.ac.kr/architecture	6210
		Department of Architectural Engineering	https://archi.kangwon.ac.kr/archi	6220
Department of Advanced Mechanical Engineering		https://mechanical.kangwon.ac.kr/mechanical https://mecha.kangwon.ac.kr/mecha/	6310	
- Major in Mechanical and Biomedical Engineering			6370	
- Major in Mechatronics Engineering				
Department of Data Science		https://multimajor.kangwon.ac.kr/multimajor/future/major-summary12.do	6390	
Department of Industrial Engineering		https://sme.kangwon.ac.kr/sme	6280	

Chuncheon Campus

College	Departments	Website	Phone (+82-33-250-)
Engineering	Department of Biotechnology and Bioengineering	https://bioeng.kangwon.ac.kr/bioeng	6270
	Department of Energy and Resources Engineering	https://enre.kangwon.ac.kr/enre	6250
	Department of Chemical Engineering	https://chemeng.kangwon.ac.kr/chemeng	6330
	Department of Civil Engineering	https://civil.kangwon.ac.kr/civil	6230
	Department of Environmental Engineering	https://environ.kangwon.ac.kr/environ	6350
	Department of Electrical and Electronics Engineering	https://eee.kangwon.ac.kr/eee	6340
	Department of Electronics Engineering	https://ee.kangwon.ac.kr/ee	6320
	Department of Computer and Communications Engineering	https://cse.kangwon.ac.kr/cse	6390
	Department of Integrated Energy and Infra System	https://bk21eis.kangwon.ac.kr	6248
Art & Sports	Department of Design	https://design.kangwon.ac.kr/design	8710
	Department of Dance	https://dance.kangwon.ac.kr/dance	8740
	Department of Fine Art	https://art.kangwon.ac.kr/art	8720
	Department of Sport Science	https://sport.kangwon.ac.kr/sport	6780
	Department of Music	https://music.kangwon.ac.kr/music	8730
Medicine	Department of Veterinary Medicine	https://vetmed.kangwon.ac.kr/vetmed	8450
	Department of Medicine	https://gmed.kangwon.ac.kr/gmed	8809
Inter-disciplinary Programs	Department of Education and Humanities Cooperation [Department of Humanities Therapy, Regional Education Cooperation]	https://bk21.kangwon.ac.kr/edu/nicer	7907

College	Departments	Website	Phone (+82-33-250-)
Inter-disciplinary Programs	Department of BIT Medical Convergence [Department of Biological Sciences, Medicine, Electrical and Electronics Engineering, Electronics Engineering]	https://bk21.kangwon.ac.kr/edu/bit	7907
	Interdisciplinary Graduate Program in Smart Agriculture [Department of Biosystems Engineering, BioResource Sciences, Horticulture]	https://bk21.kangwon.ac.kr/edu/smartfarm	7907
	Interdisciplinary Graduate Program in Medical Bigdata Convergence [Department of Medicine, Computer Science]	https://bk21.kangwon.ac.kr/edu/bigdatamed	7907



Samcheok Campus

College	Departments	Website	Phone (+82-33-	
Humanities and Social Science	Department of Public Administration	https://cms.kangwon.ac.kr/he	570-6630	
	Department of Tourism Management	https://cms.kangwon.ac.kr/tour	540-3430	
	Department of English	https://cms.kangwon.ac.kr/ya	570-6650	
	Department of Early Childhood Education	https://knuchild.kangwon.ac.kr/knuchild	570-6812	
	Department of Regional Economics	https://cms.kangwon.ac.kr/kj	570-6640	
	Department of Social Welfare	https://cms.kangwon.ac.kr/sw	570-6361	
	Department of Addiction Rehabilitation	https://atri.kangwon.ac.kr:8455/pagegenerator.asp?catalogid=atri&language=ko&pagecode=sub02_1	570-6440	
Natural Science	Department of Food and Nutrition	https://foodnutrition.kangwon.ac.kr/foodnutrition	540-3310	
	Department of Emergency Medical Rehabilitation	https://cms.kangwon.ac.kr/emt	-	
	Department of Dental Hygiene	https://cms.kangwon.ac.kr/dental	540-3390	
	Department of Occupational Therapy	https://cms.kangwon.ac.kr/ot	540-3480	
Engineering	Department of Architecture and Civil Convergence Engineering	https://cms.kangwon.ac.kr/suace	570-6505	
	Department of Architectural Design	https://sg.kangwon.ac.kr	570-6590	
	Department of Mechanical-Vehicle Engineering	https://cms.kangwon.ac.kr/mech/major/mechanical-engineering01.do	570-6390,6320	
	Department of Mechanical-Computer-Industrial and Management Engineering	https://cms.kangwon.ac.kr/mech	570-6580	
	Department of Urban Regeneration Convergence	https://ur.kangwon.ac.kr	570-6590	
	Department of Software and Media Engineering	https://aisw.kangwon.ac.kr/aisw	570-6430	
	Department of Fire and Disaster Prevention Engineering	https://cms.kangwon.ac.kr/fire	540-3119	
	Department of Energy and Mineral Resources Engineering	https://jw.kangwon.ac.kr/jw	570-6305	
	Department of Energy and Chemical Engineering	https://che.kangwon.ac.kr/che	570-6540	
	Department of Materials and Metallurgical Engineering	https://cms.kangwon.ac.kr/ame	570-6410	
	Department of Electrical Engineering	https://knuee.kangwon.ac.kr/knuee	570-6340	
	Department of Electronics, Information and Communication Engineering	https://eice.kangwon.ac.kr/eice	570-6400	
	Department of Control and Instrumentation Engineering	https://cms.kangwon.ac.kr/je	570-6380	
	Department of Earth and Environmental Engineering	https://cms.kangwon.ac.kr/sceee	570-6570	
	Department of Civil and Construction Engineering	https://ce.kangwon.ac.kr/ce	570-6505	
	Art & Sports	Department of Visual Design	https://multidesign.kangwon.ac.kr/multidesign	570-6680
		Department of Physical Education	https://cms.kangwon.ac.kr/sp	570-6660

Campus Map

You can view details of each campus by accessing the QR or the URL listed above.



Chuncheon Campus



<https://www.kangwon.ac.kr/site/campusmap/chuncheon.html#n>

Samcheok Campus



<https://www.kangwon.ac.kr/site/campusmap/samcheok.html>

Dogye Campus



<https://www.kangwon.ac.kr/site/campusmap/dogye.html#n>

Various Forms for 2023 Spring & Fall Semester

Form1) Application for International Students, Spring/Fall 2023

For reference (In Korean or English on the online application website)

2023학년도 전기/후기 외국인 입학지원서 Application for International Students, Spring/Fall 2023						
성명 Full Name	성(Family name): 이름(Given name):	수험번호 Application Number				Photo 사진 3cm×4cm
국적 Nationality	생년월일 Date of Birth	년(Year)	월(Month)	일(Day)		
외국인등록번호(소지자에 한함) Alien Registration Number (If applicable)	성별 Gender	<input type="checkbox"/> 남 M <input type="checkbox"/> 여 F				
휴대폰 Mobile Phone	이메일 E-mail					
주소 Mailing Address	* Please write your address precisely to receive your Certificate of Admission					
학위과정 Type of Degree	<input type="checkbox"/> 석사 Master's <input type="checkbox"/> 박사 Ph.D. <input type="checkbox"/> 석박사통합 Combined (Master's & Ph.D.)					
지원 계열 College	지원 학과 Department					
학력사항 Academic History	학교명(Name of School)	기간(From~To~)	전공(Major)			
	학력조회 동의 Consent to Academic Background Check : <input type="checkbox"/> 동의 Agree <input type="checkbox"/> 동의하지 않음 Disagree					
	한국어능력시험 성적 TOPIK Test Score	TOPIK()급	공인영어시험 성적 English Proficiency Test Score			
기숙사 신청 In-campus Housing	<input type="checkbox"/> 예 Yes <input type="checkbox"/> 아니오 No					
비상연락처 Emergency Contact	보호자(Parent/Guardian)		한국(In Korea)			
개인정보 수집 동의 Agreement to Access to Private Information	<input type="checkbox"/> 예 Yes <input type="checkbox"/> 아니오 No					

본 지원자는 위 기재사항이나 제출된 정보가 허위 또는 부정확한 경우 입학이 취소될 수 있으며 등록금을 반환받지 못함을 이해합니다.
I certify that the information contained in this application form and in all application materials are complete and accurate, and I understand that submission of inaccurate information may be a sufficient cause for terminating my enrollment and the tuition fees cannot be refunded.

Date 날짜 _____

Applicant's Signature 지원자 서명 _____

※ Tips for the Application Form

입학지원서 작성방법 참고사항

Language

The Application Form should be filled in Korean or English.
한국어 또는 영어로 작성

Academic Background Check

You must check the box "Agree" in the 'Consent for Academic Background Check'.
학력조회 동의 여부 필히 표시

Emergency Contact

For the Emergency Contact in Korea, you may provide your friend's contact information in Korea.
한국 내 비상연락처는 친구의 연락처 기재

Phone number

Please write your phone number in the following order.
; country code + area code + local phone number
전화번호는 (국가)+(국내지역번호)+(통화가능전화번호) 순서로 기재

Form2) Personal Statement & Study Plan (Graduate)

Kangwon National University
Personal Statement & Study Plan (Graduate)
(자기소개서 & 수학계획서)

Please type or print in English or Korean. (영어 또는 한국어로 작성)
Please restrict your comments(The total amount of No.1~6) to 800 words in English or 2,000 words in Korean. (1~6번 내용 포함 총 한국어 약 2,000자 이내, 영어 약 800개 단어 이내로 작성)

■ Application Number (수험번호): _____
 ■ Applicant's Name (성명): _____
Last(Family) First Middle

■ Type of Degree (학위과정): _____
 ■ Desired Department(Major) (지원학과(전공)): _____

Personal Statement (자기소개서)

1. What has motivated you to pursue a graduate degree? Why are you interested in your major?
 (대학원 지원 이유와 전공에 관심 갖게 된 이유 기재)

2. How will your background and preparation, including education and professional experience, contribute to your success in the graduate program? Please describe any challenges you have faced during your previous education and how to overcome your challenges.
 (대학원 수학을 위해 준비해온 학업적·전문적 경험, 배경과 이 과정에서 겪은 어려움을 어떻게 도전하고 극복했는지 기재)

3. What particular research interests do you hope to explore? Why are you interested in these areas? What do you hope to achieve in your graduate program?
 (관심 연구분야와 그 이유, 대학원 공부를 통해 성취하고 싶은 사항 기재)

Study Plan (수학계획서)

4. Please describe your study plan for graduate study in your area of specialization. Be as specific as you can regarding your academic interests and the curriculum you expect to follow in achieving your goals.
 (대학원 수학계획 구체적 작성, 학문적 관심분야와 커리큘럼에 기반하여 작성)

5. Please describe your future plans or goals after graduate studies.
 (졸업 후 계획 또는 목표 작성)

6. Please describe any involvement in special projects, research, papers that are part of your academic studies, or awards.
 (연구참여, 연구실적목록, 논문, 보고서, 수상경력 등 기재)

Form3) Confirmation of Submission of Document on Language Qualifications

Confirmation of Submission of Document on Language Qualifications
언어자격 제출 약속서

■ Application Number 수험번호: _____
 ■ Applicant's Name 성 명: _____
 ■ Nationality 국 적: _____
 ■ Department(Major) 전 공: _____

Applicant will submit a document to prove language proficiency for international student application to Kangwon National University by **February 17, 2023 for 2023 Spring semester / August 18, 2023 for 2023 Fall semester.**

지원자는 외국인 입학 전형 서류 중 언어자격 관련 증빙 서류를 **전기 2023년 2월 17일(금) / 후기 2023년 8월 18일(금)**까지 제출하겠습니다.

Date 날짜 _____

Signature 서명 _____

Form4) Recommendation Letter for Exceptional Researcher

Recommendation Letter for Exceptional Researcher
우수 연구자 추천서

Course 학위과정 : (Master's, doctoral, combined)
 Department 지원학과 : _____
 Name 성 명 : _____
 Major 지원전공 : _____

Even though the above-mentioned applicant did not meet the Korean language or English language qualifications of the **Spring/Fall 2023** Graduate School (masters, doctoral, combined) for International Students, I recommend him/her for his/her excellent research abilities as follows.

상기자를 **2023학년도 전기/후기** 강원대학교 대학원 외국인입학전형 (석사·박사·통합과정)에 한국어 또는 영어 능력 입학기준에 도달되지 못함에도 불구하고 다음과 같이 연구능력이 탁월하여 추천합니다.

Date(yyyy/mm/dd): _____

Prospective Academic Advisor
 Department : _____ Position: _____
 Name : _____ (Signature)

To the President of Kangwon National University
강원대학교총장 귀하

- 5 -

Form5) Letter of Consent for Academic Background Check

2023-1/2

**LETTER OF CONSENT FOR ACADEMIC BACKGROUND CHECK
(학력조회동의서)**

Name: _____
Date of Birth.: _yyyy/mm/dd _____

교육과정 Level of Education	학교명 Name of School	학교주소 및 홈페이지 School Address & Homepage	대학교 담당자		학위번호 Degree Registration Number
			전화번호/Phone 팩스번호/Fax 기관 이메일/ Institution's E-mail		
대학 (College or University)					
대학 (College or University)					

※ Phone and fax number must include country and regional calling codes.
※ Applicants must correctly fill out the above information in order to properly investigate their education background

상기의 자료는 귀교에서 공식적으로 본인의 학력 자료를 조회하는데 이의가 없음을 동의합니다.
I hereby authorize Kangwon National University to officially request my academic and personal information from each academic institution I have attended, in connection with the admission process.

2022/2023

지원자 성명 / Name of Applicant : _____ (서명/Signature)

Form6) Financial Support Statement

Financial Support Statement

재 정보 증 서

■ Applicant Information 지원자 정보

- Name 성 명 : _____
- Application Number 수험번호 : _____
- Type of Degree 학위과정 : _____
- Department(Major) 학과(전공) : _____

■ Financial Sponsor 재정보증인

- Name 성 명 : _____
- Relationship with the Applicant 지원자와의 관계 : _____
- Occupation & Company Name 직업 & 회사 : _____
- Address 주소 : _____
- Phone Number 전화번호 : _____
- Sponsor's Account Balance 보증인 계좌 잔고 : _____ USD

* A Certificate of Deposit Balance on the Sponsor's Account having more than 18,000 USD should be attached hereto.
미화 18,000달러 이상의 은행 잔고증명서가 첨부되어야 합니다.

The Applicant or Financial Sponsor hereby guarantees to support all the costs for the Applicant's studies at Kangwon National University.

지원자 본인 혹은 지원자의 재정보증인은 학업기간 동안 소요되는 일체의 경비 부담을 보증합니다.

Date 날짜 : _____

Sponsor's Signature 보증인 서명 : _____

